

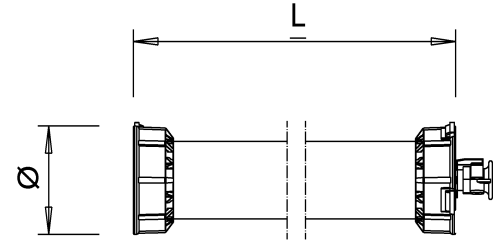
| | | |
|--|--|----------------------------|
| Manufacturing date | 29.09.2014 - | |
| Product description | Explosion protected portable luminary with battery back-up (EM) | |
| ATEX & IECEx marking | Ex II 2 G Ex e ib mb op is IIC T4 Gb Ex II 2 D Ex tb op is IIIC T90°C Db (subject to type of socket) | |
| Temperature classification | T4 (internal) T90 °C (external) | |
| Operating temperature | -20°C ... +40°C | |
| Light source | 1 Led module with SafeEye® technology | |
| Light emitted at source | up to 2000 lm with battery back-up operation up to 35 % of normal, app 700 lm | |
| Photobiological safety | Exempt group (No marking required, safe in normal use) | |
| Supply Voltage (min-max) | 100-250VAC/DC, 0/50/60Hz or 20-50VAC/DC, 0/50/60Hz | |
| Supply Current (typical) | 230V -0,2 A 110V -0,4 A | 42 V -0,8 A 24 V -1,3 A |
| Electrical class | Class 1 (100-250V), Class 3 (20-50V) | |
| Power consumption | < 30 W | |
| Cable | Standard cable H07BQ-F | |
| Plug and socket | 2P + Earth (110-230V) 2P+E, 3P, 2P (24-42V) | |
| Enclosure | Dissipative materials (PC & TPE) | |
| Ingress protection | IP66 (A-VERSION) IP54-IP66 (C-version, IP rating is subject to type of socket) | |
| Weight (without cable, socket and plug) | 2,9 kg | |
| EM | Li-Ion battery for back-up function (EM) Back-up operation time up to 90 min Battery charging time from empty to full ~11h Battery life-time 3-4 years or 600 charging cycles Main light will shortly blink every 15s when lamp is in the EM mode. Visible sign EXIT | |
| Operation functions | <p>Push Button LED will flash when battery is charging, be constantly lit when battery full and turn off when power supply is not present.</p> | |
| Other features | ON/OFF Switch (ib- explosion protection) | |
| Accessories | SLAM Click'n Fix magnetic fixing system Protective film | |
| Warranty | You will find detailed warranty conditions from www.atexor.com/warranty | |



Datasheet
SLAM Hornet EXIT 1LED



| | Dimensions / mm | |
|-------------------------|-----------------|-----|
| Product model | L | Ø |
| SLAM® Hornet EXIT 1 LED | 708 | 115 |



Value Driven Safety

Distributed by: Saurya HSE Pvt Ltd
HO: C-112 A Kailash Business Park,
Veer Sawarkar Marg, Vikhroli West, Mumbai 400079, India
T: +91 22 4065 5555 | E: info@sauryahse.com | W: sauryahse.com