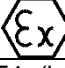


ATEXOR code	SH1LED....	
Manufacturing date	01/2017	
Product description	Explosion protected portable luminary	
ATEX & IECEx marking	 Ex II 2 G Ex e mb op is IIC T4 Gb Ex II 2 D Ex tb op is IIIC T90°C Db (subject to type of socket)	
Temperature classification	T4 (internal) T90 °C (external)	
Operating temperature	-20°C ... +40°C	
Light source	1 Led module with SafeEye® technology	
Light emitted at source	up to 2650 lm	
Luminous flux (measured)	1514 lm	
Colour temperature	5000 K +/- 10 %	
Colour rendering index	>80	
Photobiological safety	Exempt group (No marking required, safe in normal use)	
Supply Voltage (min-max)	100-250VAC/DC, 0/ 50/60Hz or 20-50VAC /DC, 0/50/60Hz	
Supply Current (typical)	230V~0,1 A 110V~0,2 A	42V~0,9 A 24V~1,6 A
Electrical class	Class 1 (100-250 V), Class 3 (20-50V)	
Input power (P)	< 25 W	
Power factor	>0,96	
Cable	Standard cable H07BQ-F	
Plug and socket	2P+E (110-230V) 2P+E, 3P, 2P (24-42V)	
Enclosure	Dissipative materials (PC & TPE)	
Ingress protection	IP66 (A-version) IP54 - IP66 (C-version, IP rating is subject to type of socket)	
Weight (without cable, socket and plug)	1,8 kg	
Accessories	SLAM Click'n Fix magnetic fixing system Protective film	
Warranty	You will find detailed warranty conditions from www.atexor.com/warranty	

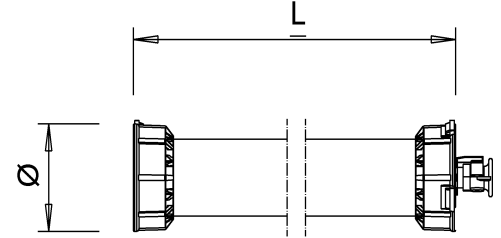




Datasheet

SLAM Hornet 1LED

Product model	Dimensions / mm	
	L	Ø
SLAM® Hornet 1LED A (cable, No Socket)	535	115
SLAM® Hornet 1LED C (cable and socket)	575	115



Value Driven Safety

Distributed by: Saurya HSE Pvt Ltd
HO: C-112 A Kailash Business Park,
Veer Sawarkar Marg, Vikhroli West, Mumbai 400079, India
T: +91 22 4065 5555 | E: info@sauryahse.com | W: sauryahse.com