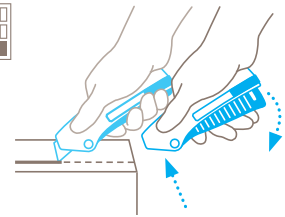


## TECHNICAL DATA SHEET

### SECUNORM MIZAR NO. 1250019

#### Safety technology



#### Automatic blade retraction – a high degree of safety

The SECUNORM MIZAR is equipped with automatic blade retraction: as soon as you release the lever, the blade disappears into the handle – and it stays there too. This provides a high degree of safety from cut injuries.



SQUEEZE-LEVER KNIFE WITH AUTOMATIC BLADE RETRACTION FOR ALL NORMAL CUTTING JOBS.

Order No. 1250019.17

#### More leverage, more performance. With ceramic blade.

The slimline SECUNORM MIZAR is your gateway into our world of quality squeeze-grip knives. Instead of a slider, a lever is responsible for releasing the blade, and instead of a steel blade, it has a permanently sharp ceramic blade. It is particularly versatile and efficient and can be used for all common cutting materials and for a wide variety of cutting types – thanks to its perfect handling.

#### Ergonomically shaped

Right-handed? Left-handed? It makes no difference with the SECUNORM MIZAR. Its ergonomically designed, lockable squeeze grip comfortably fits all hands. Making cutting super easy. Regardless of the number of cuts you make per day.

#### Plastic with a content

A glass fibre content, to be precise. These fibres are what make the SECUNORM MIZAR super strong and super solid. The durability of this safety knife is remarkable.

#### Easy blade change

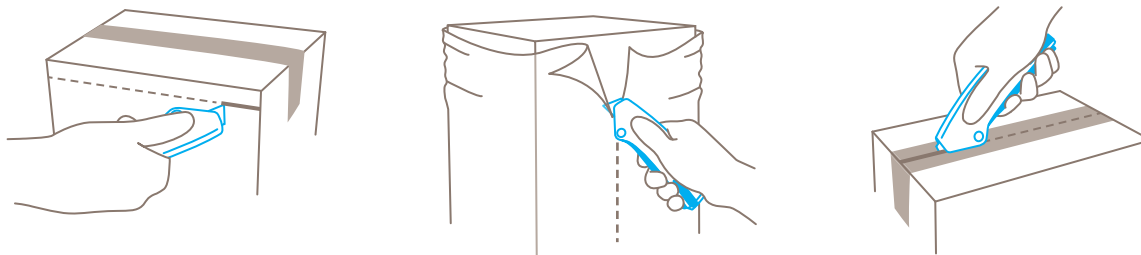
No tools are needed to change the blade. Two hands can do the job. Move the 3-in-1 safety lock to position "blade change". Swing out the lever, flip the blade cover, replace the blade. Close the cover, store the lever, continue cutting!

#### Multipurpose locking function

The SECUNORM MIZAR 3-in-1 safety lock is unique. Slide it to lock and unlock your cutting tool. And when necessary, move it to position 3 to safely change or rotate the blade.

#### 2-cutting edge blade

Before you need to change the quality blade, you have the chance to turn it over once. Usage time of the blade is doubled and fatigue is held at bay: with a simple flip of the blade, your product will cut like new.



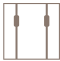







PRODUCT FEATURES

Technical features

 High safety	 Tool-less blade change	 Abrasion resistant	 Very ergonomic
 Safety lock	 2-cutting edge blade	 Cutting depth	 Ceramic
 Rounded-tip trapezoid blade	 For right and left hands	 Lanyard hole	 Printable for promotional purposes

Main cutting materials

 Cardboard: up to 2-ply	 Wrapping, stretch and shrink foil	 Plastic strapping band	 Tape
 Bagged goods	 Layers of foil or paper	 Yarn, cord	 Textile, material

Installed blade



**NO. 65232C**  
0.65 mm, ceramic, rounded blade tips, deep-edged

Optional blade



**NO. 65232**  
0.63 mm, rounded blade tips, deep-edged



**NO. 5232**  
0.63 mm, deep-edged



**NO. 52**  
0.63 mm



**NO. 5233**  
0.63 mm, 1-sided ground-edge



**NO. 610**  
0.63 mm, stainless



**NO. 85232**  
0.63 mm, deep-edged, TiN-coated



**NO. 8852**  
0.63 mm, TiN-coated



**NO. 852**  
0.63 mm, stainless, TiN-coated

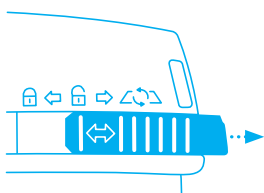


**NO. 85233**  
0.63 mm, 1-sided ground-edge, TiN-coated

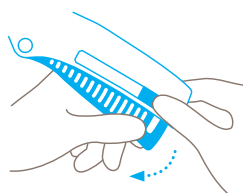


**NO. 56**  
0.63 mm

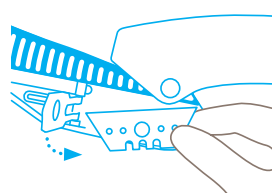
BLADE CHANGE



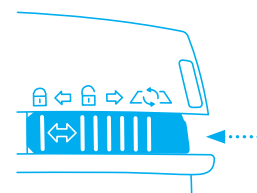
Move the 3-in-1 activator into its **rearmost position**.



Swing the lever completely **out of the handle** and flip open the blade cover.



Now you can either **rotate or replace** the blade. Re-close the blade cover.



Swing the lever **back into the handle** and set the 3-in-1 activator to either lock or unlock.

## SERVICES OFFERED



Safety poster



Technical data sheet



Consulting service

## PRODUCT AND PACKAGING DETAILS

<b>Order No.</b>	NO. 1250019.17	<b>Packaging unit</b>	1 in single unit box
<b>Knife size (L x W x H)</b>	139 x 15.6 x 50.5 mm	<b>Size Single unit box</b>	143 x 19 x 55 mm
<b>Weight knife</b>	58.0 g	<b>Weight single unit box</b>	72.5 g
<b>Basic material</b>	Glass fibre reinforced plastic	<b>EAN Code single unit box</b>	4002632802713
<b>Cutting depth</b>	13 mm	<b>Quantity in outer pack</b>	10 knives
		<b>Size outer pack</b>	114 x 104 x 148 mm
		<b>Weight outer pack</b>	777.0 g
		<b>EAN Code outer pack</b>	4002632852718
		<b>Customs tariff number</b>	69149000

## SAFETY CERTIFICATE

<b>Date of issue</b>	07.04.2020
<b>Certification</b>	GS certificate NO. 179274-7111-55094-2020

### Certificates and awards



## SAFETY ADVICE

To ensure that you use your new MARTOR knife safely and most effectively, please read and note the following user-instructions. Please keep the written guide in a safe place so that you can access it at any time.

**1. General application instructions:** Please always use the product carefully for manual cutting work only and not for any purposes other than those that are intended. Please take the correct handling and the proper use of the knives into account in this regard. As an additional safety measure, we recommend the wearing of safe gloves.

**2. Special application instructions to avoid the danger of injuries:** Only use knives that are in perfect condition and have sharp, clean and undamaged MARTOR blades. Employ the utmost care when handling the knives. Prior to use, familiarise yourself with the safety features and their functioning. Ensure that these safety features are not impaired by the type of material to be cut. **CAUTION:** The blade is sharp and can result in serious and deep cuts. Therefore, never reach into the blade! Do not place your free hand in the line of cutting and never cut directly towards you.

**3. Replacement of spare parts:** Replace any blades that become dull at the right time! Use only the replacement blades from MARTOR for this purpose. Dispose of old blades in a

proper fashion. They should not be placed in a waste paper bin, as this poses a considerable danger of injuries. Never perform any repairs yourself. If the knife shows signs of aging or any other wear, e.g. which impair safety features, blade changing or usage, the knife must be taken out of service and replaced. Do not modify this product in any way. Modifications of any kind may impair product safety. **CAUTION:** The risk of injury caused by manipulation of this product is extremely high.

**4. Non-use of the knife:** Always secure the blade in such a way (depending on product type) that injuries due to cuts are excluded. Store the knife in a secure place.

**5. Care instructions:** To guarantee a long service life, always keep the knife clean and do not expose it to unnecessary soiling and humidity.

**CAUTION: No liability will be assumed for consequential losses. Subject to technical changes and errors! This knife does not belong in the hands of children!**

## ACCESSORIES

---

### BELT HOLSTER M WITH CLIP NO. 9921



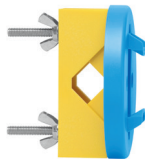
What do you do with your cutting tools when you are not actually using them? The MARTOR BELT HOLSTER M is a robust holder that allows you to carry all midsize MARTOR knives as well as our safety scissors at all times. In addition, the interior and exterior pockets are designed to allow you to load different tools: for example you can carry an extra safety knife, a pen and a pack of blades. The MARTOR BELT HOLSTER is the ideal place to stow your tools safely when moving from A to B - and have them at hand, as soon as they are required.

### USED BLADE CONTAINER NO. 9810



You can fill the USED BLADE CONTAINER with the content of your SAFEBOX. Or directly with your used blades. When the box is full, turn the lid until it shuts. Now the box cannot be reopened. The next step is to safely and completely dispose of the filled USED BLADE CONTAINER as normal waste.

### WALL MOUNT BRACKET USED BLADE CONTAINER NO. 9845



Include it in your order now! With this mounting bracket you can fix your USED BLADE CONTAINER to a central location. Use the clamp and screws and nuts supplied with the product to attach it to either a pipe or a rod.

### SAFEBOX NO. 108000



The SAFEBOX is large enough to store a large number of used blades safely. And at the same time, it is compact enough to carry with you. The two slits are not only used for filling, but also to "shorten" your snap-off blades. When your SAFEBOX is full, empty it into your USED BLADE CONTAINER.



Value Driven Safety