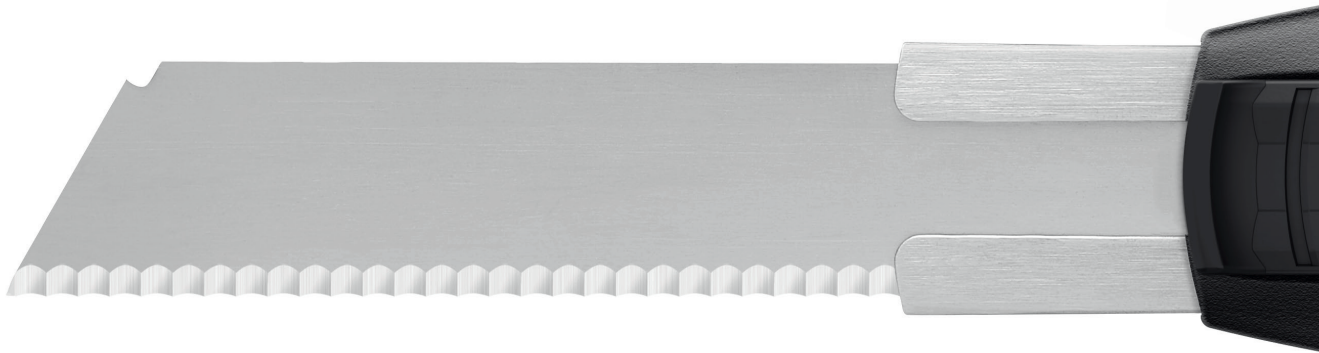


SECUBASE 383
IMPRESSES WITH ITS SETTINGS.



NEW



THE SAFER WAY TO CUT.

martor

SECUBASE 383

NO. 383005

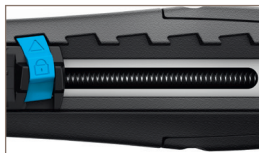


75% of the original size



Long blade extension

"Long" is actually an understatement: the blade can extend to a maximum of 7.8 cm. The serrations in the styropor blade make the SECUBASE 383 an expert for cutting up to 4-ply cardboard, expanding foam, foam and polystyrene sheets.



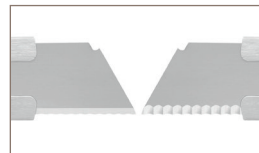
Locking and retraction

A choice of seven settings (cutting depths from 7 mm to 73 mm) is available when you want to use your SECUBASE 383 as a cutter. Afterwards, release the lock and the blade will retract as usual.



Ergonomic handle

The SECUBASE 383 has a consistent ergonomic design to protect your hand. The slightly tapered handle is very comfortable to hold. Another ergonomic feature is the slider, which is particularly easy to move because of its built-in ramp.



For right and left hander

The SECUBASE 383 is supplied ready for use by right-handers. Left handers just need to turn the blade by 180° to start cutting. The slider and the lock are operated with the thumb.



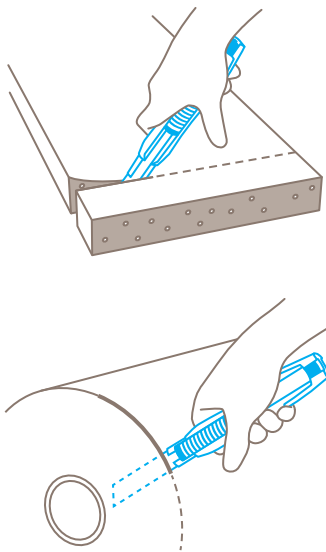
Easy blade change

To access the long, flexible blade, use the blue blade change button at the end of the handle. You can now pull out the inner section including the slider. The blade is held in position by two magnets.

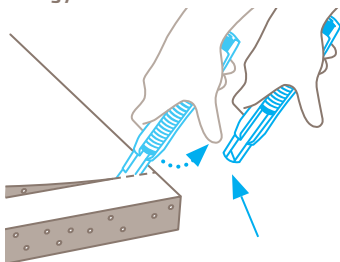
How to cut is up to you. With a serrated blade.

A safety knife that also performs as a cutter? The new SECUBASE 383 can be both. Your cutting tool is equipped with automatic blade retraction to prevent cutting injuries. Some cutting tasks, such as saw cuts, however, are easier with a fixed blade. The blade can therefore be locked in seven different positions to enable efficient working.

Application



Safety technology











Blade retraction and locking – optional safety

The automatic blade retraction of the SECUBASE 383 protects you from cutting injuries. This requires that you remove your thumb from the slider after piercing the cutting material. Alternatively, you can also lock the slider and the blade. When you release the lock, the blade retracts.

PRODUCT FEATURES

Technical features

	Optional safety		Safer blade change (with magnet)
	Very abrasion resistant		Very ergonomic
	Safety lock		Adjustable cutting depth
	For right and left handers		Lanyard hole
	Serrated edge		


Main cutting materials

	Cardboard: up to 4-ply		Layers of foil or paper
	Wrapping, stretch and shrink foil		Foam, polystyrene
	Bagged goods		Tape

Installed blade

	NO. 379	0.50 mm, 109.5 mm long, serrated edge
--	----------------	---------------------------------------

Optional blade

	NO. 79	0.50 mm, 109.5 mm long
	NO. 179	0.50 mm, 109.5 mm long, stainless
	NO. 7940	0.50 mm, 71.2 mm long
	NO. 17940	0.50 mm, 71.2 mm long, stainless

Certificates and awards



THE PERFECT FIT FOR ALL. DOES THE PERFECT JOB.




SECUBASE 383

- › Blade extension of 7.8 cm
- › Automatic blade retraction
- › Optional blade locking
- › 7-position locking
- › Ergonomic handle for left and right handers

PRODUCT DETAILS

Order No.	NO. 383005.02
Packaging unit	1 in single unit box (10 in multipack)
Knife size (L x W x H)	170.5 x 25 x 34 mm
Main material	Glass fibre reinforced plastic
Weight	78.5 g
Cutting depth	3 - 73 mm
Spare blade Packaging unit Size (L x W x Thickness)	NO. 379.60 (10 in transparent pack) 109.5 x 17.7 x 0.50 mm
Certified	Ergonomic product (IGR)

Accessories

BELT HOLSTER S WITH CLIP		NO. 9920
USED BLADE CONTAINER		NO. 9810
WALL MOUNT BRACKET USED BLADE CONTAINER		NO. 9845

CONTACT AND SERVICE

What makes our cutting solutions even safer? Our advisory services! We are always on hand, to give advice, to provide you with training material, to meet with you in person if necessary.

You will find further information on our website:
www.martor.com



At a glance: the safety poster shows the most important functions and correct usage – perfect for your workplace.



From the first cut to changing the blade, our video will show you the best way to use this knife.



Everything you want to know: dimensions, properties, special features and more about our cutting tools can be found in the technical data sheet.



Still have questions? You can reach our service department on [+49 212 73870-0](tel:+49212738700)



Distributed by: SAURYA HSE PVT LTD
Ho: C-112A, Kailash Business Park, Veer Sawarkar Marg, Vikhroli (West),
Mumbai – 400079, Maharashtra, India
T: +91 22 4065 5555 | E: commercial@sauryahse.com |
W: www.sauryahse.com