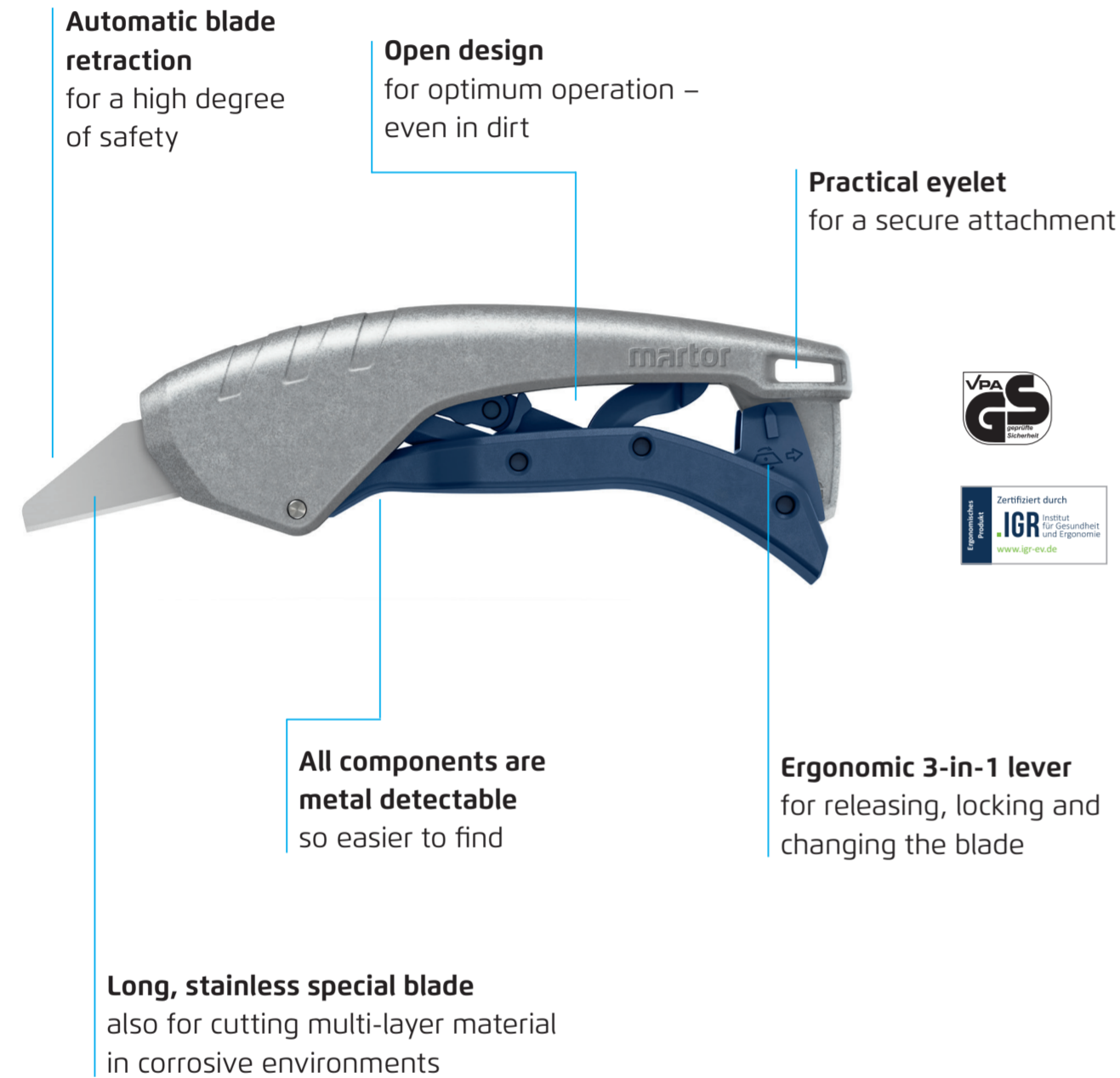


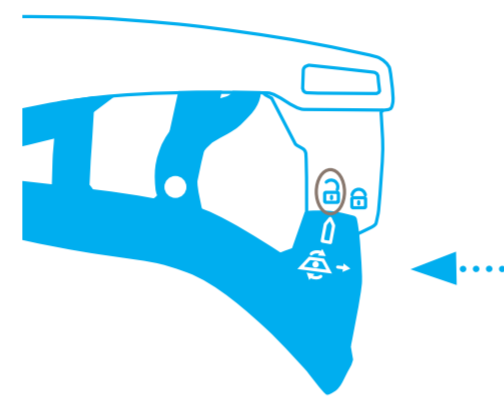
SAFETY POSTER INSTRUCTIONS FOR THE SAFE HANDLING OF YOUR CUTTING TOOL

martor

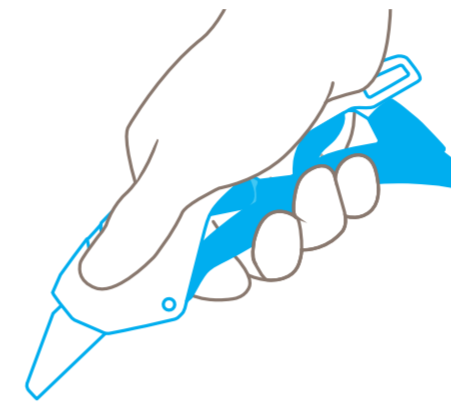
SECUNORM 610 XDR



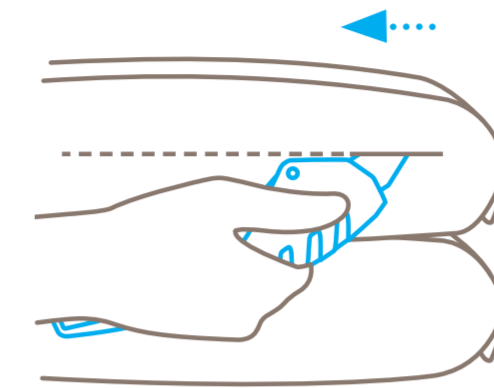
USAGE



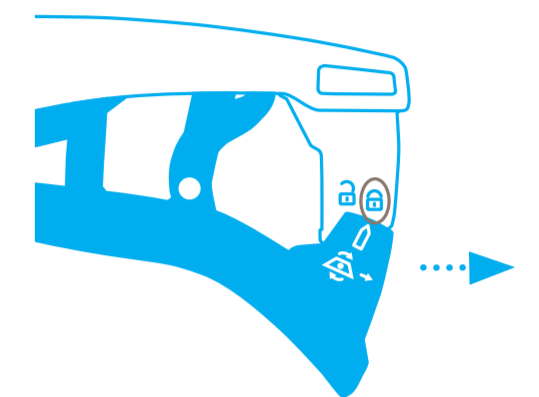
To cut, unlock the safety lock.



The **blade** can now be **released** using the lever ...

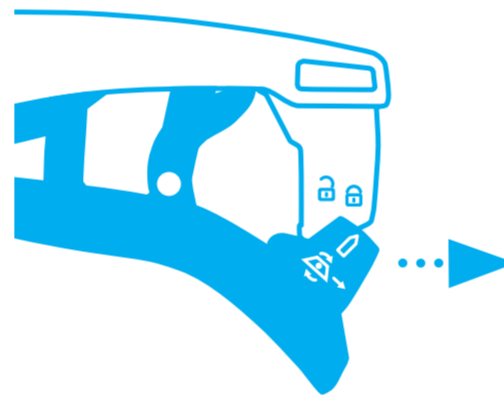


... and **cut into** the material (e.g. bag). **Important:** Never cut towards the body. After cutting, **releasing the lever** retracts the blade.



Lock the lever after cutting.

BLADE CHANGE



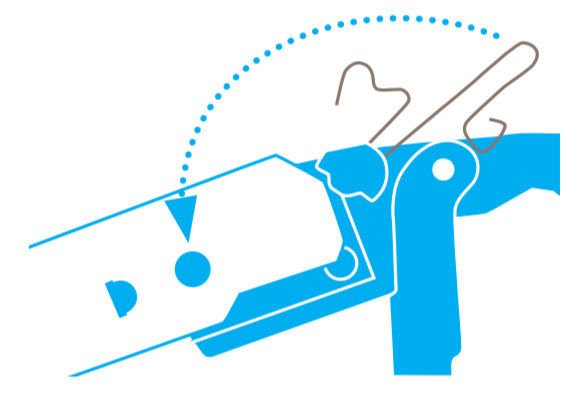
Fully **pull out the lock**...



...and unfold the handle **completely**.



Release the spring from the groove by applying **light pressure** and by pressing it to the side. Change the blade and put the replacement **precisely** on the location lobes.



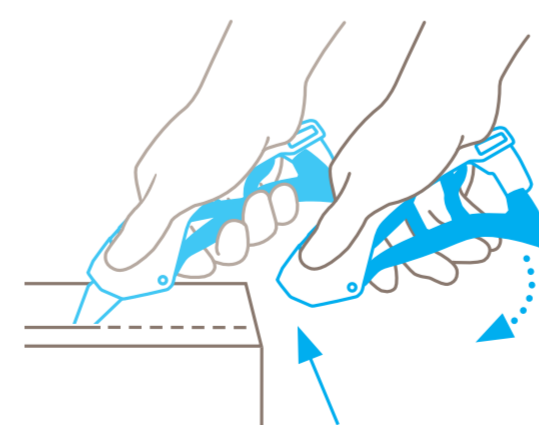
Lock the spring and swivel the **lever** back into the handle until it automatically **locks** into place. Unlock the lever and press once to test.

CLEANING



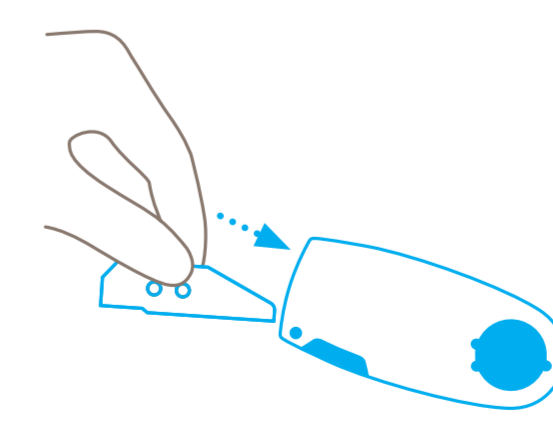
Remove the blade **before** cleaning! Use compressed air, water, alcohol or acetone depending on the type of dirt.

PROTECTION OF USER

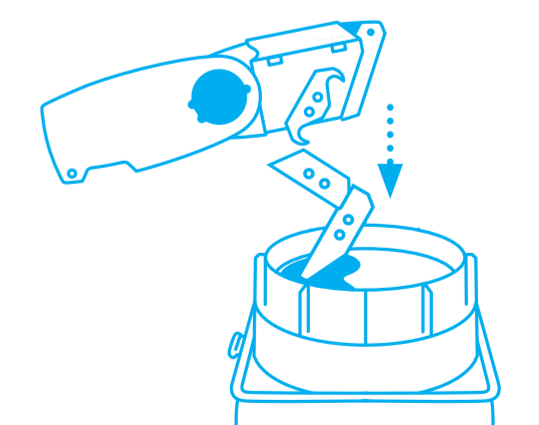


As soon as you **release the lever**, the blade disappears into the handle. And it stays there – until you engage it again.

DISPOSAL



Your **SAFEBOX** is the best place to store **used blades**.



When the **SAFEBOX** is full, **empty all contents** into your **USED BLADE CONTAINER**.

SAURYA
Engineering Control Safety Solutions



www.sauryahse.com