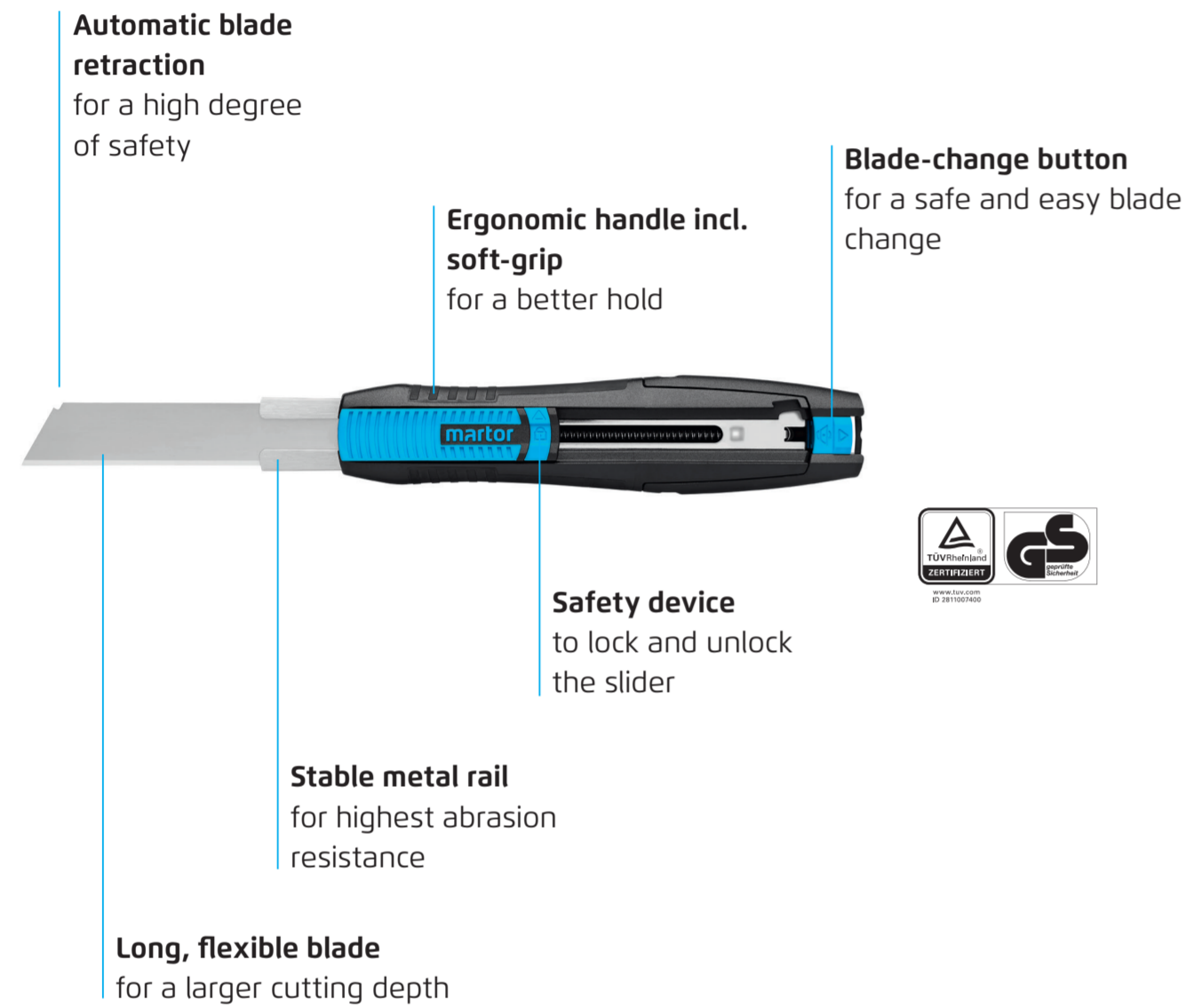


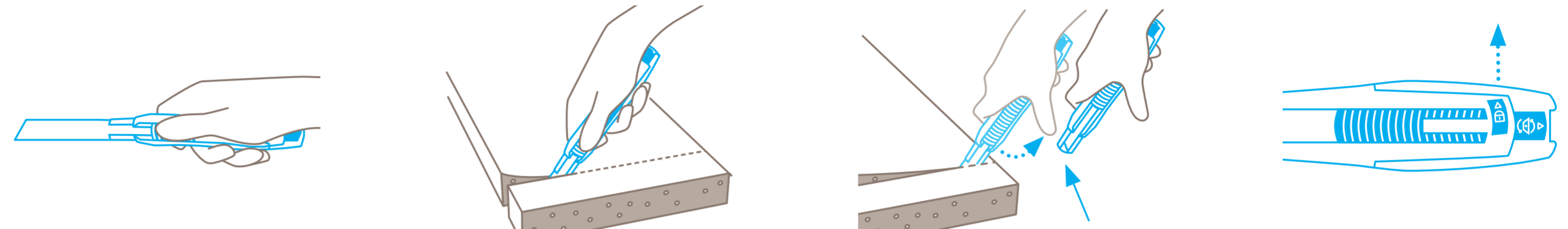
SAFETY POSTER INSTRUCTIONS FOR THE SAFE HANDLING OF YOUR CUTTING TOOL

martor

SECUNORM 380



USAGE



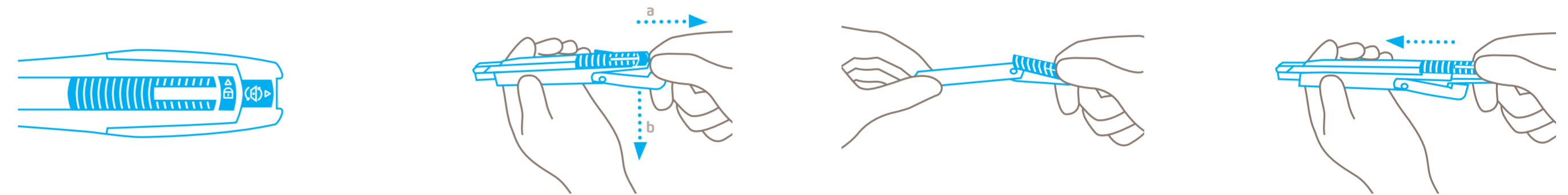
Push the slider **out** according to the desired length.

Depending on your cutting job leave your thumb at first on the slider to fix the blade.

Always **remove your thumb** from the slider at the end of your cutting job to ensure automatic blade retraction. **Always cut past your body.**

To lock the slider shut, **push the safety device** upwards as marked by the arrow.

BLADE CHANGE



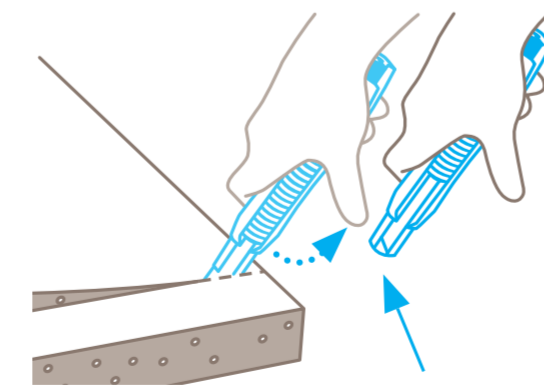
Only possible when **unlocked**. That means: Don't push the safety device upwards.

Pull the blade change button to the back as marked by the arrow (a), flip the end of the handle downwards (b) and **move the blade out of the handle** by using the slider.

Lift the slider, take out and change the blade, then position the new blade **exactly on the cam**. For left hand use, turn blade over. The two magnets fix the blade additionally.

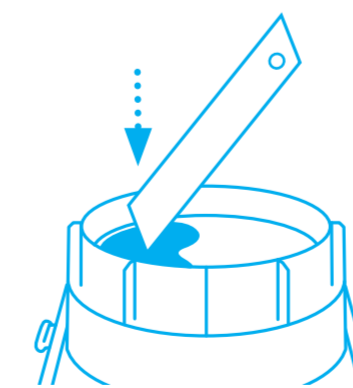
At last, slide the inner part with the blade **back into the handle** and flip the end of the handle upwards. Release and snap back the blade to ensure flawless functionality.

PROTECTION OF USER



Following cutting, the blade immediately retracts into the handle. **CAUTION: Don't block the slider** with your hand.

DISPOSAL



Your **USED BLADE CONTAINER** is the best place to store **used blades**.

SAURYA

Engineering Control Safety Solutions



www.sauryahse.com