

SECUMAX 148
HARD SHELL. SUSTAINABLE CORE.



Value Driven Safety



THE SAFER WAY TO CUT.

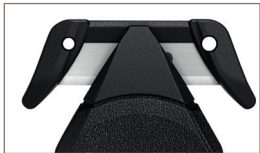
martor

SECUMAX 148

NO. 148001



Original size



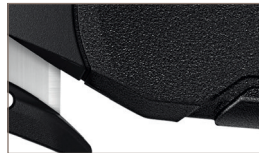
Robust blade head

The plastic-covered blade head is particularly robust with a blade thickness of 0.5 mm. This SECUMAX 148 can therefore take on especially difficult cutting materials in logistics and production.



Concealed blade

The blade head's two cutting edges are safely concealed to protect users and goods and are yet capable of safely cutting 2-ply cardboard boxes and much more.



Clever guide surfaces

Another reason why the SECUMAX 148 can cut through cardboard so easily? The guide surfaces located right at the front of the safety knife help you to cut at an angle. Angled cutting means less material resistance!



Ergonomically shaped

Right handed? Left handed? It's really all the same. The SECUMAX 148 fits perfectly in any hand. Gently arched outer edges, coupled with light ribbing and a low weight, ensure an ergonomic experience.



Sustainably built

MARTOR prioritises sustainability. SECUMAX 148 is the first MARTOR disposable knife to use only glass fibre reinforced recycled plastic. Its low weight also means materials have been used sparingly.

Feeling good – in every aspect.

Safety knives that are both disposable and sustainable? Of course! The SECUMAX 148 is made with more than 80% recycled plastic. The glass fibre reinforcement and the robust, 2-times usable blade head ensure longer service lives. This makes SECUMAX 148 ideal for tougher cutting tasks. The ergonomic handle and lightweight design will also aid safe and efficient working.

PRODUCT FEATURES

Technical features

	Maximum safety		Disposable knife
	Abrasion resistant		Very ergonomic
	2-cutting edge blade		Cutting depth 6
	For right and left handers		Lanyard hole
	Printable for promotional purposes		

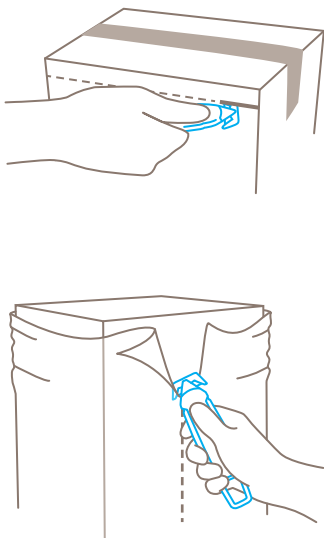
Main cutting materials

	Cardboard: up to 2-ply		Wrapping, stretch and shrink foil
	Plastic strapping band		Bagged goods
	Layers of foil or paper		Yarn, cord

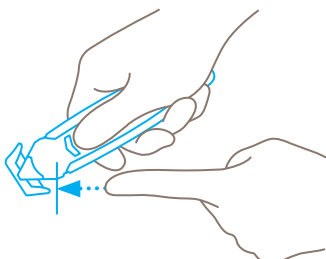
Installed blade

» The blade is moulded into the body of the cutter and cannot be changed. Blade thickness 0.50 mm.

Application



Safety technology



Concealed blade – a maximum degree of safety

The SECUMAX 148 blade is not an open one, but is hidden from people and goods. This provides you with a maximum degree of safety from cut injuries and from damage to goods.

Certificates and awards



THE PERFECT FIT FOR ALL. DOES THE PERFECT JOB.

SECUMAX 148

- › Robust blade head
- › Concealed blade
- › Handle made of recycled plastic
- › for all common cutting materials
- › GS-certified for approved safety

PRODUCT DETAILS

Order No.	NO. 148001.12
Packaging unit	10 in box (loose)
Knife size (L x W x H)	142.4 x 11 x 38.7 mm
Main material	Recycled plastic
Weight	26.0 g
Cutting depth	6.2 mm
Certified	GS certificate NO. 185848-7711-55094-2023
Accessories	
BELT HOLSTER S WITH CLIP	 NO. 9920

CONTACT AND SERVICE

What makes our cutting solutions even safer? Our advisory services! We are always on hand, to give advice, to provide you with training material, to meet with you in person if necessary.

You will find further information on our website: www.martor.com



At a glance: the safety poster shows the most important functions and correct usage – perfect for your workplace.



Everything you want to know: dimensions, properties, special features and more about our cutting tools can be found in the technical data sheet.



Still have questions? You can reach our service department on [+49 212 73870-0](tel:+49212738700)