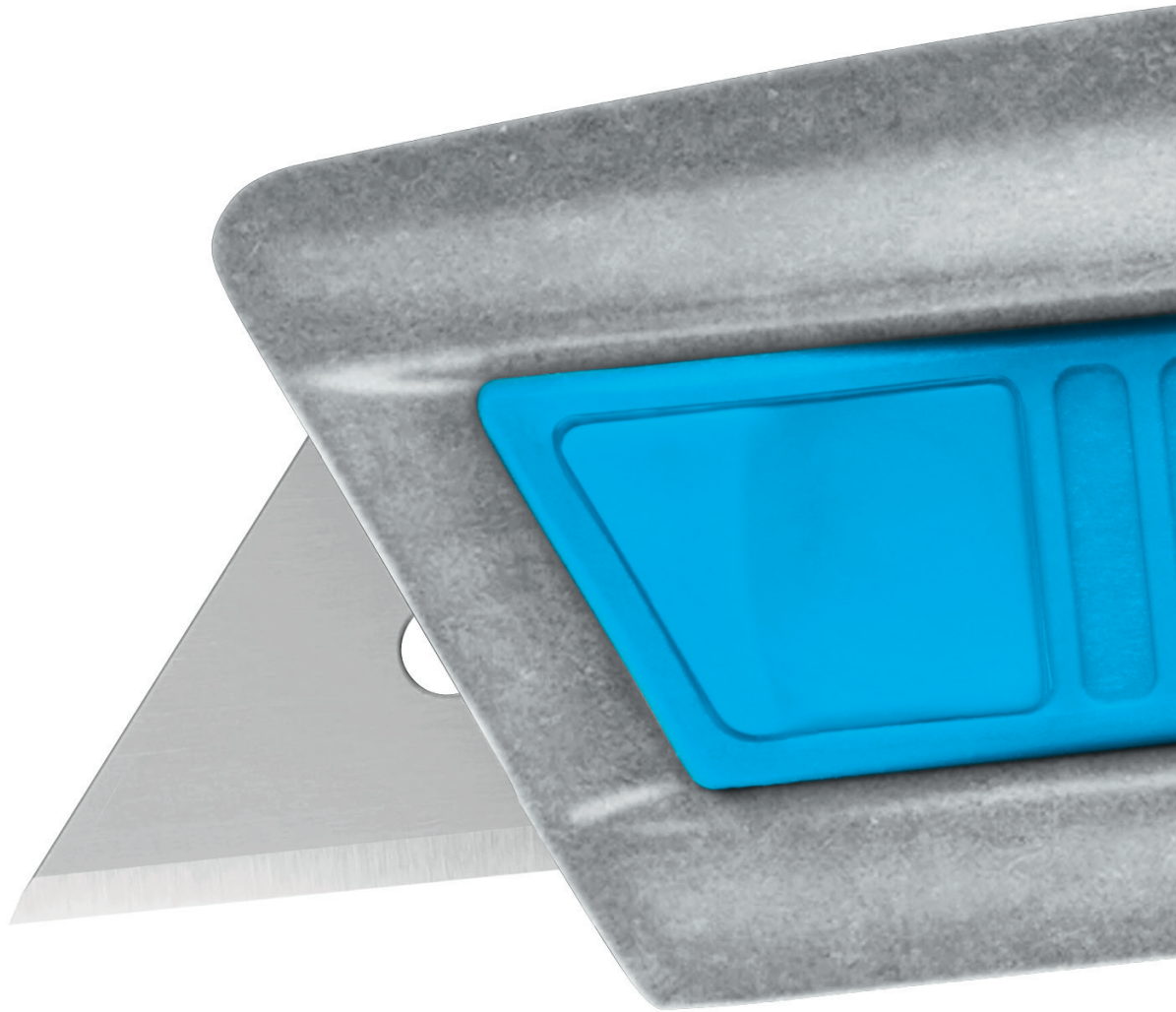


SECUPRO MEGASAFE
EXTREMELY TOUGH. EXTREMELY STRONG.

SAURYA

Value Driven Safety

NEW

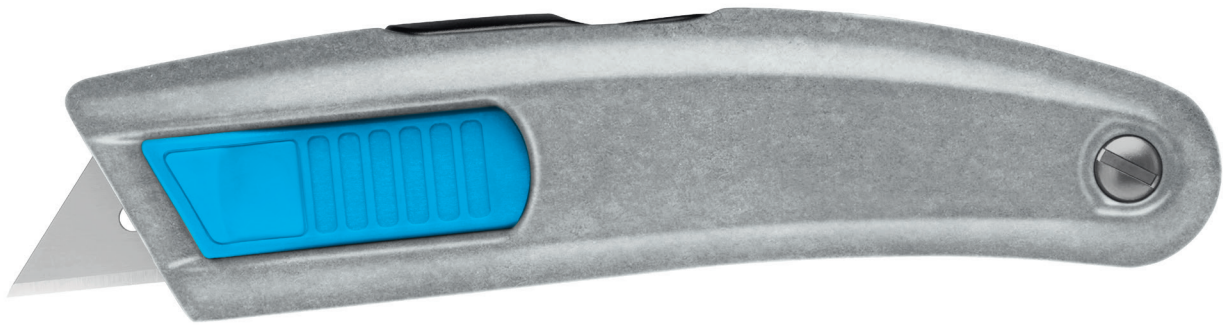


THE SAFER WAY TO CUT.

martor

SECUPRO MEGASAFE

NO. 116004



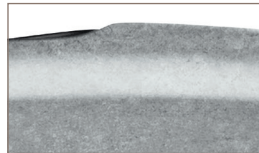
Original size



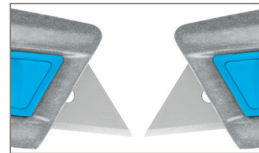
Robust unpainted handle
The high-quality SECUPRO MEGASAFE handle is 100% aluminium and is therefore highly robust. The unpainted version is ideal for all standard cutting tasks in sensitive sectors.



Change without opening
Blade change is easy and safe. Simply push down on the back end of the rocker device located on the topside of the safety knife, and push the slider completely forward. The blade is ready for changing.



Perfect handling
The lightly rounded handle fits particularly well in your hand. Your thumb doesn't get a raw deal either: soft grip on the the slider makes for a pleasant, slip-resistant resting pad.



Double-sided slider
With the right hand? With the left hand? No need to ask this question! The SECUPRO MEGASAFE is fitted with a slider that's accessible from both sides. Choose for yourself!



2-cutting edge blade
Before you need to change the stainless steel quality blade, you have the chance to turn it over once. Usage time of the blade is doubled and fatigue is held at bay: with a simple flip of the blade, your SECUPRO MEGASAFE will cut like new.

Quality that's visible – unpainted. With stain-less steel trapezoid blade.

Would you like to have a safety knife with a large blade extension? Or are you looking for a cutting tool for use in sensitive sectors? In both cases, the unpainted SECUPRO MEGASAFE is an excellent choice. Thanks to a cutting depth of up to 20mm it does not shy away from any chal-lenge. Your safety is still guaranteed since the fully automatic blade retraction functions even when you decide not to fully extend the blade. Stainless steel means that your can also use the blade in a moist environment for longer periods without problems.

PRODUCT FEATURES


Technical features

 Very high safety	 Tool-less blade change
 Very abrasion resistant	 Ergonomic
 2-cutting edge blade	 Cutting depth 20
 Ceramic blade compatible	 Soft grip
 For right and left handers	 Individually engravable LASER





Main cutting materials

 Cardboard: up to 3-ply	 Plastic strapping band
 Bagged goods	 Slabbing material off a roll
 Wrapping, stretch and shrink foil	 Tape

Installed blade

	NO. 199 0.63 mm, deep-edged, stainless
--	---

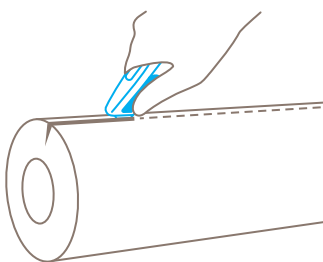
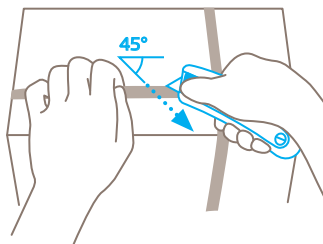
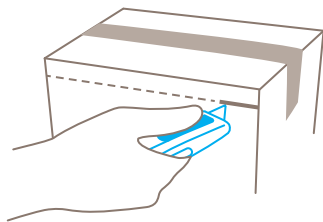
Optional blade

	NO. 99 0.63 mm, deep-edged
	NO. 60099 0.63 mm, rounded blade tips, deep-edged
	NO. 60099C 0.65 mm, ceramic, rounded blade tips, deep-edged
	NO. 98 0.63 mm

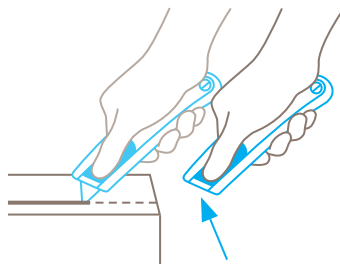
Certificates and awards



Application



Safety technology



Fully automatic blade retraction – a very high degree of safety






The fully automatic blade retraction of the SECUPRO MEGASAFE guarantees a very high degree of safety from cut injuries. The blade withdraws into the handle immediately after leaving the material being cut. Even if the slider is still being activated.

YOU CAN FEEL THE QUALITY.

SECUPRO MEGASAFE

- › High-quality aluminium handle
- › Fully automatic blade retraction
- › Notable cutting depth (cuts up to 3-ply cartons)
- › Very easy blade change
- › GS-certified for approved safety

PRODUCT DETAILS

Order No.	NO. 116004.19
Packaging unit	1 in single unit box (10 in multipack)
Knife size (L x W x H)	153 x 26 x 38 mm
Main material	Aluminium
Weight	140.0 g
Cutting depth	20.1 mm
Spare blade Packaging unit Size (L x W x Thickness)	NO. 199.70 (10 in dispenser) 60 x 19 x 0.63 mm
Certified	GS certificate NO. S 60169806
Accessories	
BELT HOLSTER M	 NO. 9921
BELT HOLSTER XXL	 NO. 9924
USED BLADE CONTAINER	 NO. 9810
WALL MOUNT BRACKET USED BLADE CONTAINER	 NO. 9845
SAFEBOX	 NO. 108000

CONTACT AND SERVICE

What makes our cutting solutions even safer? Our advisory services! We are always on hand, to give advice, to provide you with training material, to meet with you in person if necessary.

You will find further information on our website: www.martor.com



At a glance: the safety poster shows the most important functions and correct usage – perfect for your workplace.



From the first cut to changing the blade, our video will show you the best way to use this knife.



Everything you want to know: dimensions, properties, special features and more about our cutting tools can be found in the technical data sheet.



Still have questions? You can reach our service department on [+49 212 73870-0](tel:+49212738700)



Distributed by: SAURYA HSE PVT LTD
C-112A, Kailash Business Park, Veer Sawarkar Marg,
Vikhroli (West), Mumbai – 400079, Maharashtra, India
T: +91 022 4065 5555 | E: commercial@sauryahse.com
W: www.sauryahse.com