

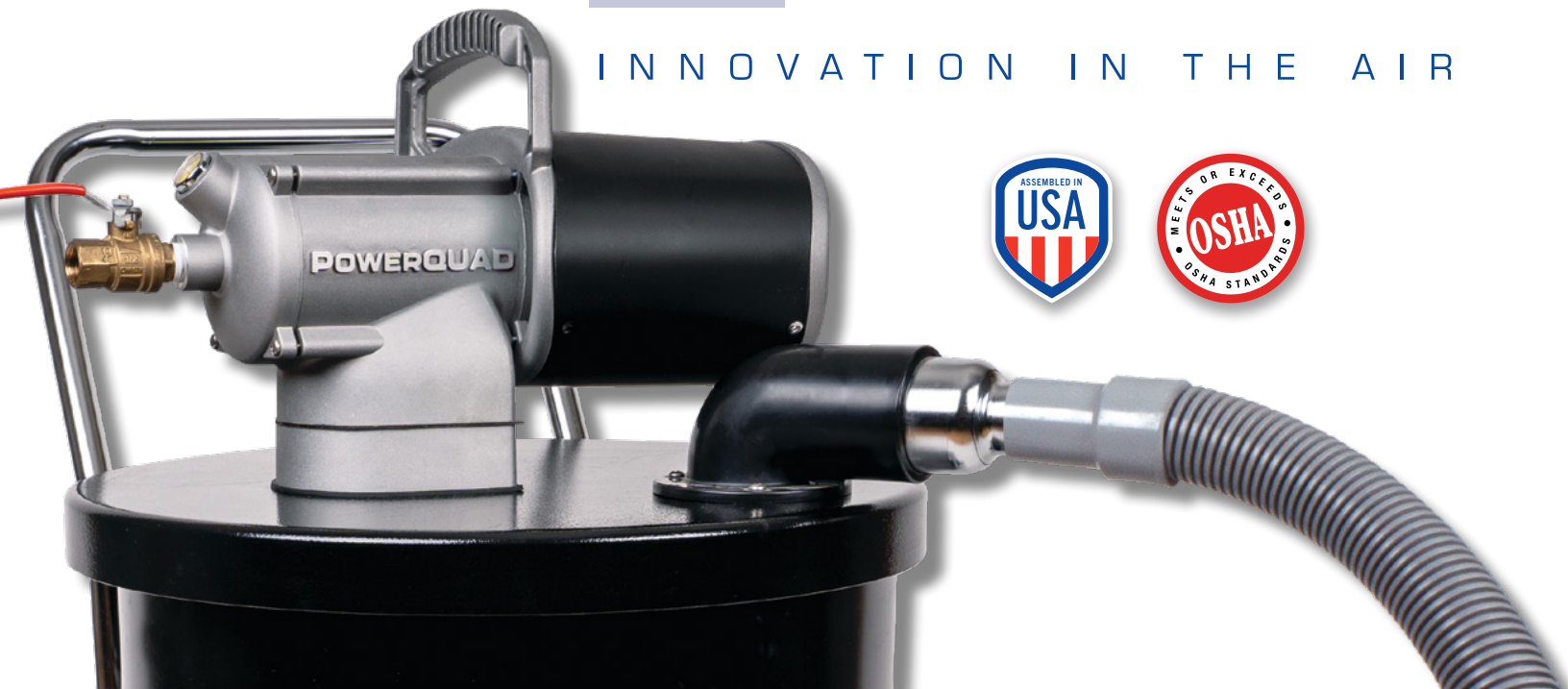
GUARDAIR®

SAURYA

Value Driven Safety

Safety Air Guns

INNOVATION IN THE AIR



# MEETING OSHA STANDARDS



At Guardair Corporation, our number one concern is worker safety. Given this focus, all Guardair safety air guns meet or exceed applicable OSHA Standards.

OSHA regulations can often be confusing. However one thing is certain. Compressed air can be extremely dangerous if misused, and horseplay in the workplace can lead to serious injury. This is why compliance with OSHA Standards pertaining to Output Pressure, Chip Guarding and Noise is critical when cleaning with compressed air.



## OSHA COMPLIANCE KIT

Understand OSHA Standards when cleaning with compressed air, test air guns for OSHA compliance, and raise plant safety awareness with the Guardair **OSHA COMPLIANCE KIT**.

### Complete kit includes:

- OSHA Standards
- Air Pressure Test Gauge
- Air Gun Safety in the Workplace Video
- Air Gun Safety Poster

Available **FREE** to Guardair Distributors and qualified End-Users.



## OUTPUT PRESSURE

Factory air lines normally operate at pressures between 80 and 120 psi (pounds per square inch). Most pneumatic tools, including air guns, require such high pressures to operate effectively. However, OSHA requires that should the nozzle tip of an air gun become dead-ended (blocked), the static pressure at the point of blockage be no more than 30 psi.

*All Guardair safety air guns meet this requirement.*

### OSHA STANDARD

**29CFR Part 1910.242 (b)**

**Hand and portable powered tools and equipment, general.**

### OSHA INSTRUCTION

**STD 01-13-001**

**OSHA PROGRAM DIRECTIVE #100-1**

## CHIP GUARDING

Blowing off debris with an air gun in close quarters often subjects workers to "chip fly-back". This term refers to the tendency of loose particles or chips to fly back into the operator's face, eyes or skin. For operations which require close-in work, OSHA requires that "effective chip guarding" be incorporated into the workplace.

*Guardair offers safety air guns designed for close-in work incorporating a protective air cone for effective chip guarding.*

### OSHA STANDARD

**29CFR Part 1910.242 (b)**

**Hand and portable powered tools and equipment, general.**

### OSHA INSTRUCTION

**STD 01-13-001**

**OSHA PROGRAM DIRECTIVE #100-1**

## NOISE

Excessive noise generated in the workplace can be harmful. To address this problem, OSHA has developed permissible daily noise exposure specifications. The use of low noise, safety air guns can sometimes be an important component in moving towards noise compliance.

*Guardair offers safety air guns which incorporate proprietary noise-limiting features.*

### OSHA STANDARD

**29CFR Part 1910.95 (a)**

**Occupational noise exposure.**

# APPLICABLE OSHA STANDARDS

## OUTPUT PRESSURE/CHIP GUARDING

### OSHA STANDARD

**29CFR Part 1910.242 (b)**

**Hand and portable powered tools and equipment, general.**

Compressed air used for cleaning. Compressed air shall not be used for cleaning purposes except where reduced to less than 30 psi and then only with effective chip guarding and personal protective equipment.

### OSHA INSTRUCTION

**STD 01-13-001**

**October 30, 1978**

**Office of Program Operations**

**February 14, 1972**

**OSHA PROGRAM DIRECTIVE #100-1**

**To: National and Field Offices**

**Subject: Reduction of Air Pressure Below 30 psi for Cleaning Purposes**

**Attachment: Acceptable Methods for Complying with 41 CFR 50-204.8 and 29 CFR 1910.242(b)**

**1. Purpose.** To provide guidance and examples of what alternate systems will meet the requirements of this section, and to clarify its intent.

**2. Background.** A number of inquiries have been received requesting a clarification of the meaning of 1910.242(b) also known as 41 CFR 50-2048 under the Walsh-Healey Act.

**3. Interpretation.** The phrase "reduce to less than 30 psi" means that the downstream pressure of the air at the nozzle (nozzle pressure) or opening of a gun, pipe, cleaning lance, etc., used for cleaning purposes will remain at a pressure level below 30 psi for all static conditions. The requirements for dynamic flow are such that in the case when dead ending occurs a static pressure at the main orifice shall not exceed 30 psi. This requirement is necessary in order to prevent a back pressure buildup in case the nozzle is obstructed or dead ended. See enclosure (1) for two acceptable methods of meeting this requirement. Also, there is no intent to restrict the diameter of the nozzle orifice or the volume (CFM) flowing from it.

"Effective chip guarding" means any method or equipment which will prevent a chip or particle (of whatever size) from being blown into the eyes or unbroken skin of the operator or other workers. Effective chip guarding may be separate from the air nozzle as in the case where screens or barriers are used. The use of protective cone air nozzles are acceptable in general for protection of the operator but barriers, baffles or screens may be required to protect other workers if they are exposed to flying chips or particles.

**4. Action.** Inquiries about subject section should be handled in accordance with this instruction.

**5. Effective Date.** This instruction is effective immediately, and will remain in effect until canceled or superseded.

Director, of Program Operations

## NOISE

### OSHA STANDARD

**29CFR Part 1910.95 (a)**

**Occupational noise exposure.**

Protection against the effects of noise exposure shall be provided when the sound levels exceed those shown in Table G-16 when measured on the A scale of a standard sound level meter at slow response.

**Table G-16 Permissible Noise Exposures**

Duration per day, hours	8.0	6.0	4.0	3.0	2.0	1.5	1.0	0.5	0.25
Sound level dBA slow response	90	92	95	97	100	102	105	110	115



# Big Air Guns

Big and powerful safety air guns for heavy-duty industrial and construction applications.



**SAURYA**

Value Driven Safety





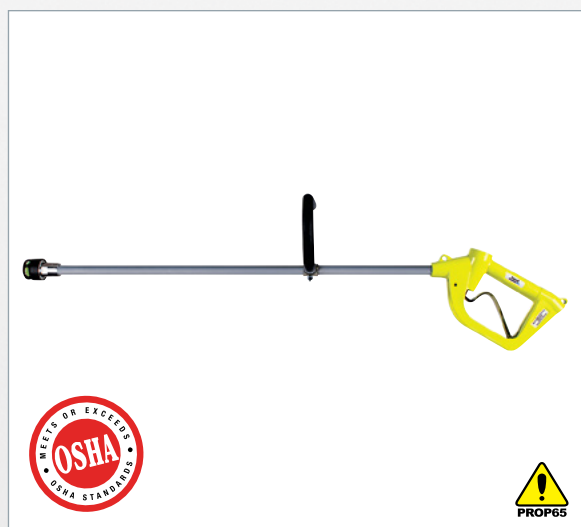
## Force 5® Safety Air Gun Series

The most powerful safety air gun on the planet, the Force 5 Series is designed for heavy-duty industrial and construction cleaning applications. Built for the toughest environments, they deliver maximum compressed air when and where required. Featuring a dead-man trigger, the Force 5 Series is the safe alternative to dangerous, "home-made," ball valve actuated, open pipes. Engineered to be paired with tow-behind, or large in-plant compressors.

### Features

- Rugged, lightweight, pistol-grip style aluminum handle
- Heavy-duty aluminum extension
- Adjustable auxiliary handle
- Powerful aluminum Venturi nozzle
- 3/4" FNPT inlet
- Meets OSHA standards

Part No.	Model/Description	Air Inlet FNPT (in)	Min. Compressor Required (hp)	Flow (cfm)	Output Thrust (lbs)	Noise Level (dBA)	Dimensions (L" x W" x H")	Weight (lbs)
F5024AA	With 24" Extension	3/4	41	185	12	121	36 x 10 x 12.5	4.5
F5036AA	With 36" Extension	3/4	41	185	12	121	48 x 10 x 12.5	4.9
F5048AA	With 48" Extension	3/4	41	185	12	121	60 x 10 x 12.5	5.3
F5060AA	With 60" Extension	3/4	41	185	12	121	72 x 10 x 12.5	5.7
F5072AA	With 72" Extension	3/4	41	185	12	121	84 x 10 x 12.5	6.1



## Force 5® QuietForce® Safety Air Gun Series

Delivering high power at low noise levels, the Force 5 QuietForce Series is designed for heavy-duty industrial and construction cleaning applications where both attributes are required. Patented QuietForce nozzle features an array of micro-nozzles which produce high thrust at reduced noise levels. Featuring a dead-man trigger, the Force 5 QuietForce Series are the safe alternative to dangerous, "home-made," ball valve actuated, open pipes. Engineered to be paired with tow-behind, or large in-plant compressors.

### Features

- Rugged, lightweight, pistol-grip style aluminum handle
- Heavy-duty aluminum extension
- Adjustable auxiliary handle
- QuietForce Nozzle
- 3/4" FNPT inlet
- Meets OSHA standards

Part No.	Model/Description	Air Inlet FNPT (in)	Min. Compressor Required (hp)	Flow (cfm)	Output Thrust (lbs)	Noise Level (dBA)	Dimensions (L" x W" x H")	Weight (lbs)
F5024AQF	With 24" Extension	3/4	29	130	7.1	101	32.8 x 10 x 12.5	4.4
F5036AQF	With 36" Extension	3/4	29	130	7.1	101	44.8 x 10 x 12.5	4.8
F5048AQF	With 48" Extension	3/4	29	130	7.1	101	56.8 x 10 x 12.5	5.2
F5060AQF	With 60" Extension	3/4	29	130	7.1	101	68.8 x 10 x 12.5	5.6
F5072AQF	With 72" Extension	3/4	29	130	7.1	101	80.8 x 10 x 12.5	6.0



## Inforcer® Safety Air Gun Series

Designed as the "in-line" version of the Force 5, the Inforcer excels in heavy-duty industrial and construction cleaning applications. Built for the toughest environments, they deliver maximum compressed air where and when required. Featuring a dead-man trigger, the Inforcer Series are the safe alternative to dangerous, "home-made," ball valve actuated, open pipes. Engineered to be paired with tow-behind, or large in-plant compressors.

### Features

- Thermally insulated, in-line style, aluminum handle
- Heavy-duty aluminum extension
- Adjustable auxiliary handle
- Powerful aluminum Venturi nozzle
- 3/4" FNPT inlet
- Meets OSHA standards

Part No.	Model/Description	Air Inlet FNPT (in)	Min. Compressor Required (hp)	Flow (cfm)	Output Thrust (lbs)	Noise Level (dBA)	Dimensions (L" x W" x H")	Weight (lbs)
INF5024AA	With 24" Extension	3/4	41	185	12	121	34.4 x 3.4 x 12.5	4.1
INF5036AA	With 36" Extension	3/4	41	185	12	121	46.4 x 3.4 x 12.5	4.5
INF5048AA	With 48" Extension	3/4	41	185	12	121	58.4 x 3.4 x 12.5	4.8
INF5060AA	With 60" Extension	3/4	41	185	12	121	70.4 x 3.4 x 12.5	5.2
INF5072AA	With 72" Extension	3/4	41	185	12	121	82.4 x 3.4 x 12.5	5.6



## Inforcer® QuietForce® Safety Air Gun Series

Delivering high power at low noise levels, the Inforcer QuietForce is designed for heavy-duty industrial and construction cleaning applications where both attributes are required. Patented QuietForce nozzle features an array of micro-nozzles which produce high thrust at reduced noise levels. Featuring a dead-man trigger, the Inforcer Series are the safe alternative to dangerous, "home-made," ball valve actuated, open pipes. Engineered to be paired with tow-behind, or large in-plant compressors.

### Features

- Thermally insulated, in-line style, aluminum handle
- Heavy-duty aluminum extension
- Adjustable auxiliary handle
- QuietForce® nozzle
- 3/4" FNPT inlet
- Meets OSHA standards

Part No.	Model/Description	Air Inlet FNPT (in)	Min. Compressor Required (hp)	Flow (cfm)	Output Thrust (lbs)	Noise Level (dBA)	Dimensions (L" x W" x H")	Weight (lbs)
INF5024AQF	With 24" Extension	3/4	29	130	71	101	31.2 x 3.4 x 12.5	4.0
INF5036AQF	With 36" Extension	3/4	29	130	71	101	43.2 x 3.4 x 12.5	4.4
INF5048AQF	With 48" Extension	3/4	29	130	71	101	55.2 x 3.4 x 12.5	4.8
INF5060AQF	With 60" Extension	3/4	29	130	71	101	67.2 x 3.4 x 12.5	5.1
INF5072AQF	With 72" Extension	3/4	29	130	71	101	79.2 x 3.4 x 12.5	5.5





## Inforcer® Steel Safety Air Gun Series

Combining striking tool and air gun capabilities, the unique Inforcer Steel is perfect for surface preparation, roadwork, and concrete repair. Built for the toughest environments, they deliver maximum compressed air when and where required. Featuring a hardened steel chisel point nozzle and dead-man trigger, they are the safe alternative to dangerous, "home-made," ball valve actuated, open pipes. Engineered to be paired with tow-behind, or large in-plant compressors.

### Features

- Thermally insulated, in-line style, steel handle
- Rugged steel extension
- Adjustable auxiliary handle
- Hardened steel, chisel point nozzle
- 3/4" FNPT inlet
- Meets OSHA standards

Part No.	Model/Description	Air Inlet FNPT (in)	Min. Compressor Required (hp)	Flow (cfm)	Output Thrust (lbs)	Noise Level (dBA)	Dimensions (L" x W" x H")	Weight (lbs)
INF5024SS	With 24" Extension	3/4	41	185	12	121	35 x 3.4 x 12.5	8.1
INF5036SS	With 36" Extension	3/4	41	185	12	121	47 x 3.4 x 12.5	8.9
INF5048SS	With 48" Extension	3/4	41	185	12	121	59 x 3.4 x 12.5	9.7
INF5060SS	With 60" Extension	3/4	41	185	12	121	71 x 3.4 x 12.5	10.6
INF5072SS	With 72" Extension	3/4	41	185	12	121	83 x 3.4 x 12.5	11.4



## HydroForce® Power Wash Gun Series

Heavy-duty HydroForce power washer combines compressed air and standard municipal utility water to generate superior cleaning power. No external pressure unit or power package; requires no electricity, or gasoline. Single trigger operation provides convenient air/water operation. Turn off water with water shutoff valve (included) for air-only drying. Virtually maintenance free. Hot or cold water capable. Perfect for mobile applications where portability is at a premium.

### Features

- Rugged, lightweight, ergonomic aluminum handle
- Stainless steel extension
- Adjustable auxiliary handle
- Aluminum safety tip nozzle
- Max water temperature - 200°F
- Air - 3/4" FNPT
- Water - Garden hose connector (female)
- Meets OSHA standards

Part No.	Model/Description	Air Inlet FNPT (in)	Syphon Flow Rate (gpm)	Flow (cfm)	Output Thrust (lbs)	Noise Level (dBA)	Dimensions (L" x W" x H")	Weight (lbs)
HYD024SSA	With 24" Extension	3/4	3.4	140	13.5	99	38 x 10 x 19.9	6.7
HYD036SSA	With 36" Extension	3/4	3.4	140	13.5	99	50 x 10 x 19.9	7.7
HYD048SSA	With 48" Extension	3/4	3.4	140	13.5	99	62 x 10 x 19.9	8.5



Value Driven Safety

**Distributed by: SAURYA HSE PVT LTD**

**HO: C-112A, Kailash Business Park, Veer Sawarkar Marg, Vikhroli (West), Mumbai – 400079.**

**T: +91 22 4065 5555 | E: [info@sauryahse.com](mailto:info@sauryahse.com) | W: [www.sauryahse.com](http://www.sauryahse.com)**