

SECUPRO MAXISAFE  
AND YOU WILL BE FULLY SATISFIED.  
AUTOMATICALLY.

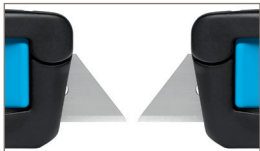


ENJOY SAFETY  
MADE IN SOLINGEN

**martor**

# SECUPRO MAXISAFE

NO. 101199



**Double-sided slider**  
With the right hand? With the left hand? Who cares! The SECUPRO MAXISAFE is fitted with a double-sided slider, accessible from both sides.



**At the press of a button**  
Your two hands alone are enough to change the blade. And these short instructions: press the blade change button and swing open the handle. Push the blade carrier to the front and you can change the blade. It's that easy.



**Metal guard**  
SECUPRO MAXISAFE is not afraid of a little friction. A metal abrasion protection shield, found on the underside of the knife head, works to prevent any general wear and tear as you cut your path through the day.



**Double-edged blade**  
Don't change your blade the moment the tip turns blunt. Double the usage time of your blades and minimize wastage by always remembering to flip them over. Don't forget: there are two sides to every blade!

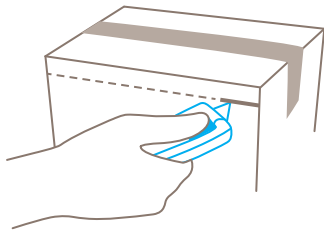


**Small eyelet**  
No one likes to lose their tools. Especially not tools like the SECUPRO MAXISAFE. That's what the eyelet is for; to safely transport and tie down your cutter.

**With a 2-sided slider and pointed-tip trapezoid blade.**

Are you often only satisfied with the maximum? That connects you to the SECUPRO MAXISAFE, our safety knife with the fully automatic blade retraction. Thanks to its large blade extension it masters even 3-layer cardboard boxes - depending on the blade shape attached, but also all other materials such as carpets or foils, for example. It also provides the maximum comfort, whether you are right or left handed.

**Application**



**PRODUCT FEATURES**

**Technical features**

- |   |  |
|---|--|
|  Very high safety     |  Tool-less blade change               |
|  Abrasion resistant   |  Ergonomic                            |
|  2-times usable blade |  Extended blade length                |
|  Cutting depth       |  For right and left hander           |
|  Lanyard hole       |  Printable for promotional purposes |




**Main cutting materials**

- |   |   |
|---|---|
|  Cardboard: up to 3-ply             |  Plastic strapping band  |
|  Tape                               |  Layers of foil or paper |
|  Wrapping, stretch, and shrink foil |  Yarn, cord              |

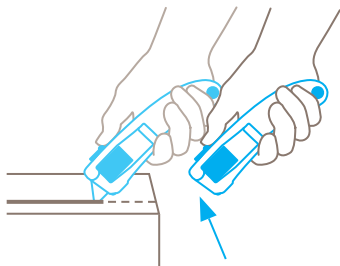
**Installed blade**



**Optional blade**

- |  |  |
|--|--|
|  | <b>NO. 199</b> 0.63 mm, deep-edged, stainless            |
|  | <b>NO. 60099</b> 0.63 mm, rounded blade tips, deep-edged |
|  | <b>NO. 98</b> 0.63 mm                                    |

**Safety technology**



**Fully automatic blade retraction – a very high degree of safety**  
The fully automatic blade retraction of the SECUPRO MAXISAFE guarantees a very high degree of safety from cut injuries. The blade withdraws into the handle the moment it leaves the material being cut. Even when the slider is being held forward.

**Certificates and awards**



# THE PERFECT FIT FOR ALL. DOES THE PERFECT JOB.

## SECUPRO MAXISAFE

- › Double-sided slider
- › Fully automatic blade retraction
- › Notable cutting depth (cuts up to 3-ply cartons)
- › Metal cap for wearability
- › TÜV-certified

## PRODUCT DETAILS

<b>Order No.</b>	NO. 101199.02
<b>Packaging unit</b>	1 in single unit box (10 in multipack)
<b>Knife size (L x W x H)</b>	148 x 18 x 42 mm
<b>Main material</b>	Glass fibre reinforced plastic
<b>Weight</b>	64.5 g
<b>Cutting depth</b>	17.2 mm
<b>Spare blade Packaging unit Size (L x W x Thickness)</b>	NO. 99.70 (10 in dispenser) 60 x 19 x 0.63 mm
<b>Certified</b>	GS certificate NO. S 60077225
<b>Accessories</b>	
BELT HOLSTER S WITH CLIP	 NO. 9920
HOLSTER LARGE	 NO. 9843
USED BLADE CONTAINER	 NO. 9810
WALL MOUNT BRACKET USED BLADE CONTAINER	 NO. 9845
SAFEBOX	 NO. 108000



Value Driven Safety

## CONTACT AND SERVICE

What makes our cutting solutions even safer? Our advisory services! We are always on hand, to give advice, to provide you with training material, to meet with you in person if necessary.

You will find further information on our website:

[www.suryahse.com](http://www.suryahse.com)



At a glance: the safety poster shows the most important functions and correct usage – perfect for your workplace.



From the first cut to changing the blade, our video will show you the best way to use this knife.



Everything you want to know: dimensions, properties, special features and more about our cutting tools can be found in the Technical Data Sheet.



Still have questions? You can reach our service department on [+91 22 4065 5555](tel:+912240655555)